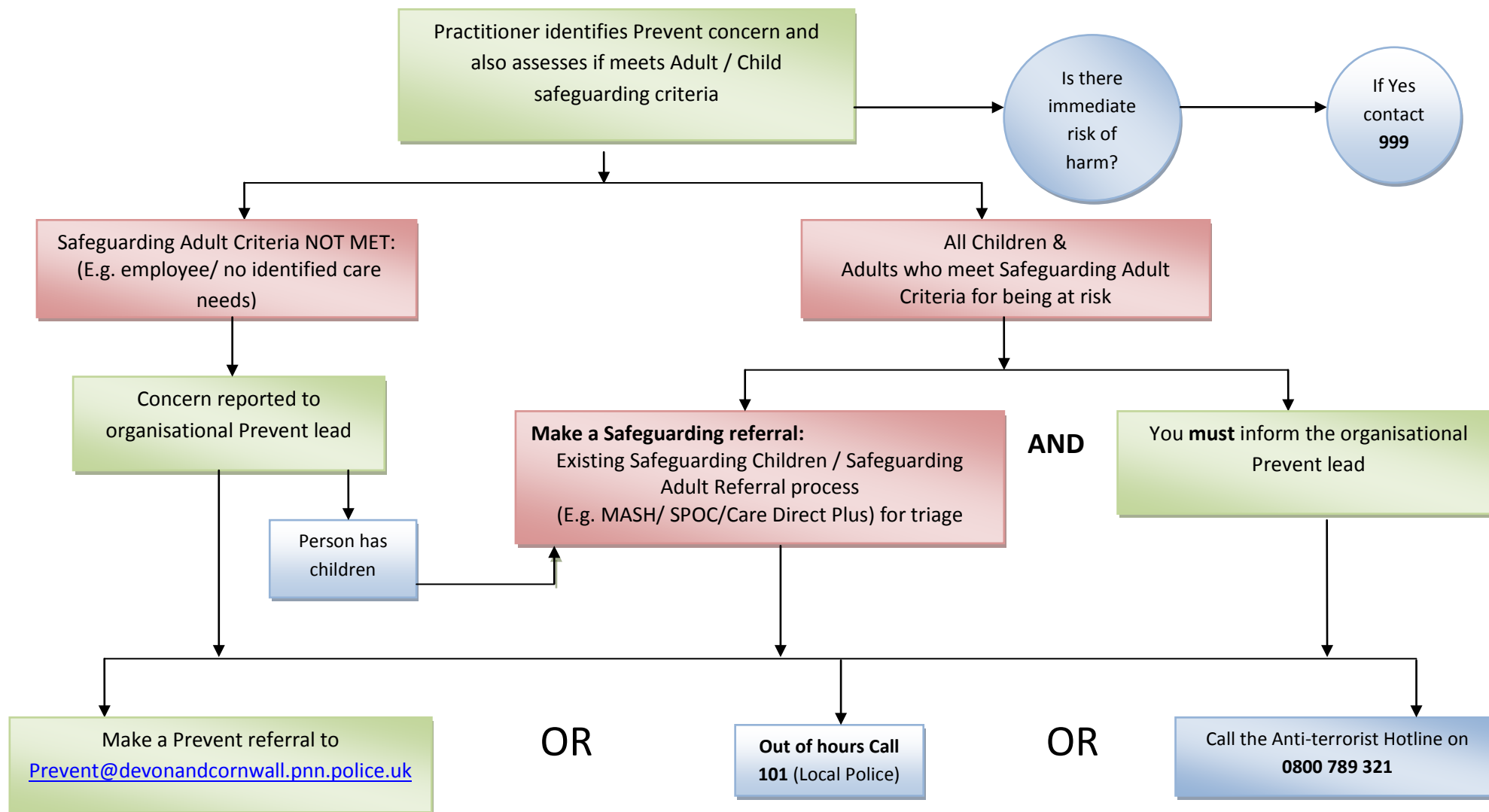


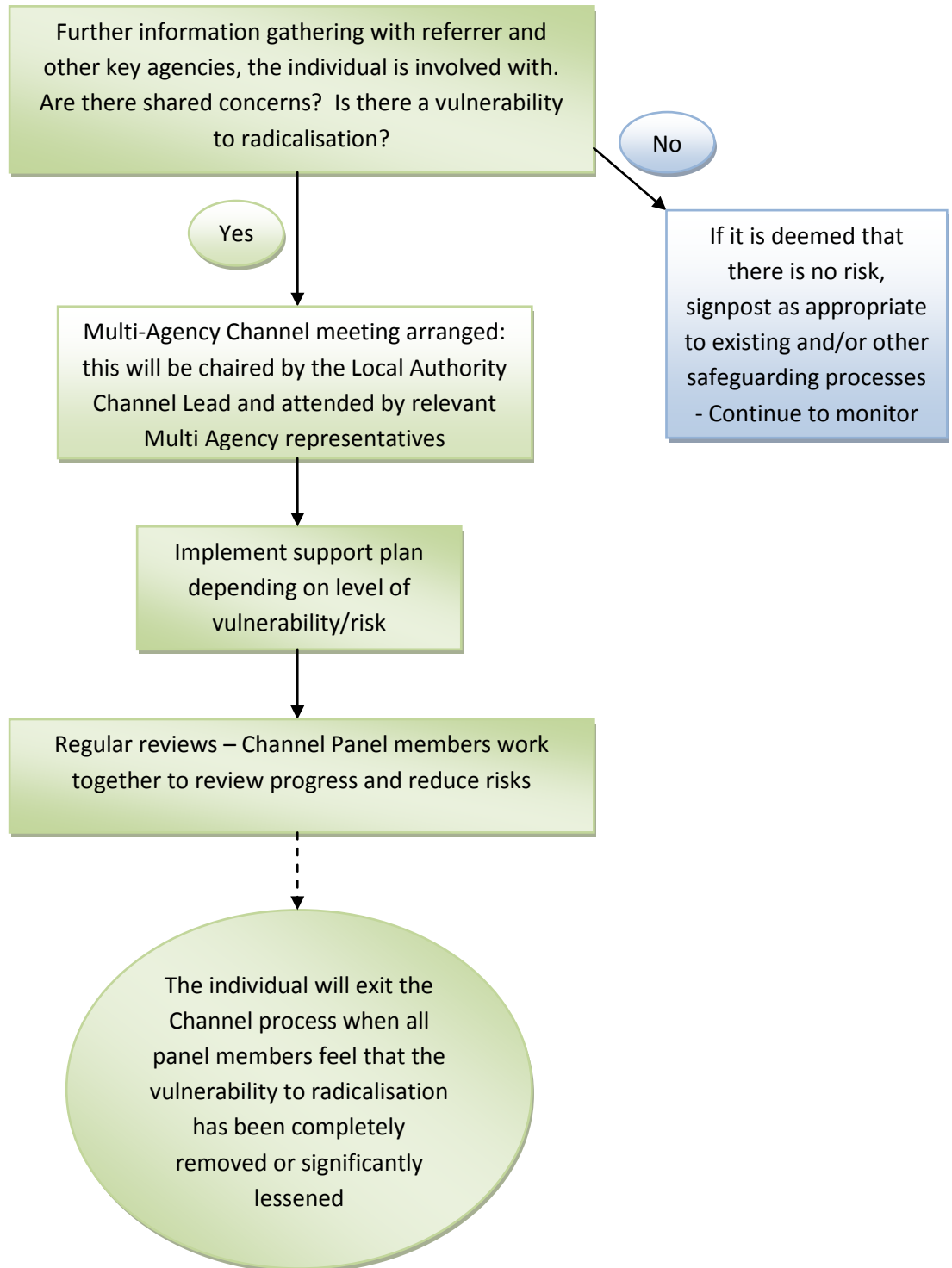
The Channel Referral Process

Channel is a multi agency safeguarding process and early intervention strategy aimed at identifying and supporting individuals (including children) vulnerable to the recruitment of violent extremism. It must be noted this includes all forms of extremism. It is a mechanism for ensuring that these individuals are assessed and supported by professionals using statutory safeguarding frameworks and multi-agency partnership working. Below is a flowchart which illustrates how to refer a concern of this nature.



The Channel Referral Process

Once a referral has been made and it meets the Channel criteria, the individual/group become part of the Channel process, the Police will carry out the below process with the support of multi agency partners working to the relevant Local Authority Lead. This process takes place in order to identify the level of risk and an appropriate support plan where necessary.



If you wish to know more about Channel please contact the Regional Prevent/ Channel lead (South)
DI Sam Norman on 01392 452555 alternatively send any questions to
prevent@devonandcornwall.pnn.police.uk